



# WISCONSIN

FAH MEMBER FACILITIES

## SENATE

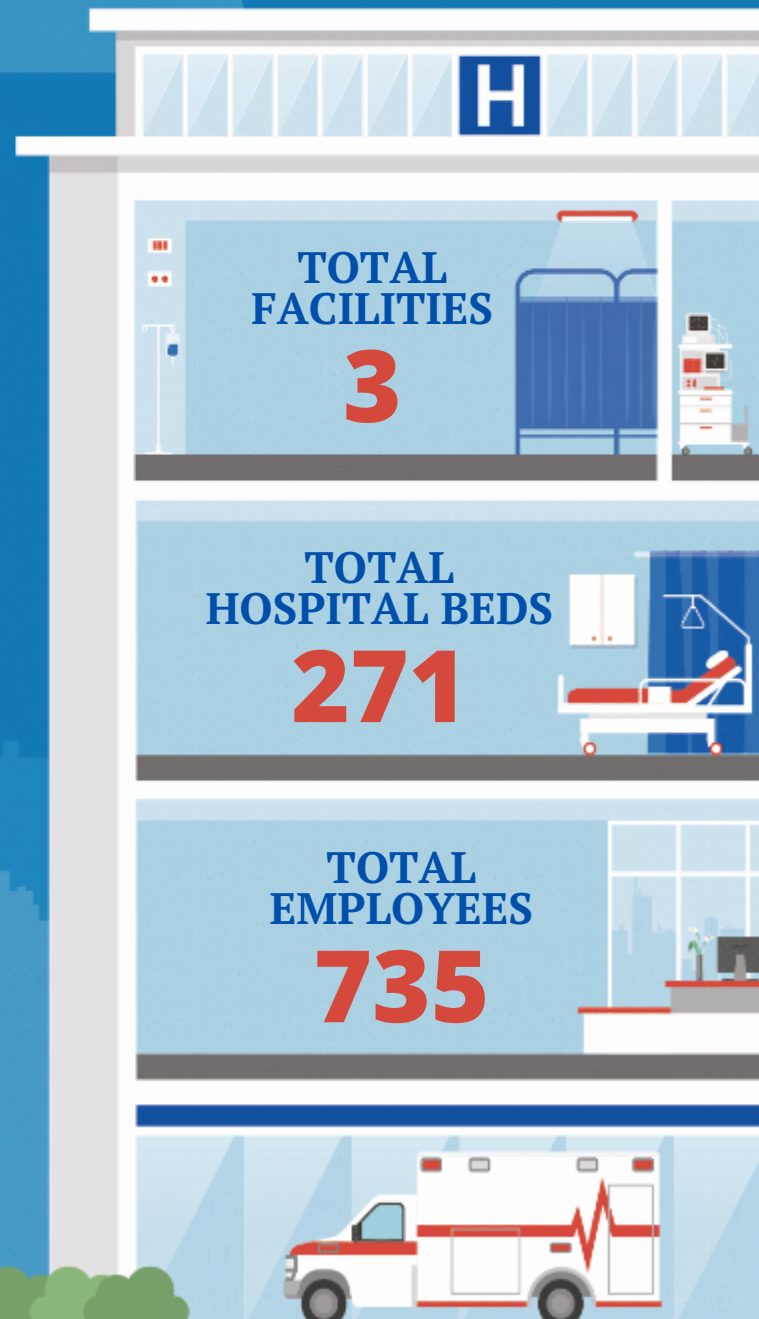
Sen. Ron Johnson (R)  
Sen. Tammy Baldwin (D)

## HOUSE *(Click name to view the district)*

Rep. Mark Pocan (D) / Wisconsin 2nd  
Rep. Gwen Moore (D) / Wisconsin 4th  
Rep. Scott Fitzgerald (R) / Wisconsin 5th



Federation of American Hospitals represents America's tax-paying community hospitals and health systems.





Beds Employees

**REP. MARK POCAN (D) / WISCONSIN 2ND**

**1 HOSPITALS**

Encompass Health Rehabilitation Hospital of Fitchburg	Fitchburg	Encompass	56	154
-------------------------------------------------------	-----------	-----------	----	-----

**REP. GWEN MOORE (D) / WISCONSIN 4TH**

**1 HOSPITALS**

Granite Hills Hospital	West Allis	Universal Health Services, Inc.	120	125
------------------------	------------	---------------------------------	-----	-----

**REP. SCOTT FITZGERALD (R) / WISCONSIN 5TH**

**1 HOSPITALS**

Watertown Regional Medical Center	Watertown	ScionHealth	95	456
-----------------------------------	-----------	-------------	----	-----

^  
BACK  
TO TOP