



RHODE ISLAND

FAH MEMBER FACILITIES

SENATE

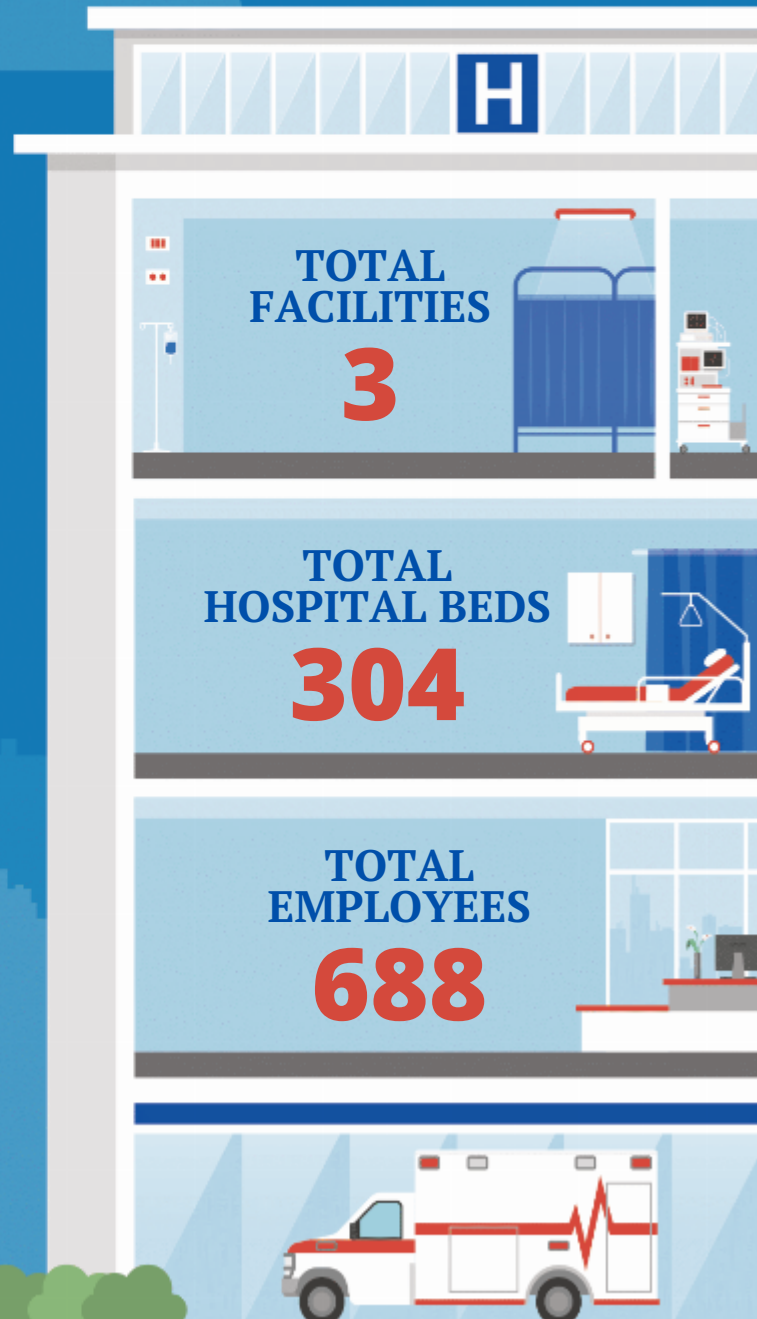
Sen. Jack Reed (D)
Sen. Sheldon Whitehouse (D)

HOUSE *(Click name to view the district)*

Rep. Gabe Amo (D) / Rhode Island 1st
Rep. Seth Magaziner (D) / Rhode Island 2nd



Federation of American Hospitals represents America's tax-paying community hospitals and health systems.





RHODE ISLAND FAH MEMBER FACILITIES

			Beds	Employees
REP. GABE AMO (D) / RHODE ISLAND 1ST				
2 HOSPITALS				
Landmark Medical Center	Woonsocket	Prime Healthcare Services	214	633
Rehabilitation Hospital of Rhode Island	North Smithfield	Prime Healthcare Services	40	55
REP. SETH MAGAZINER (D) / RHODE ISLAND 2ND				
1 HOSPITALS				
Encompass Health Rehabilitation Hospital of Johnston	Johnston	Encompass	50	

^
BACK
TO TOP