



PENNSYLVANIA

FAH MEMBER FACILITIES

SENATE

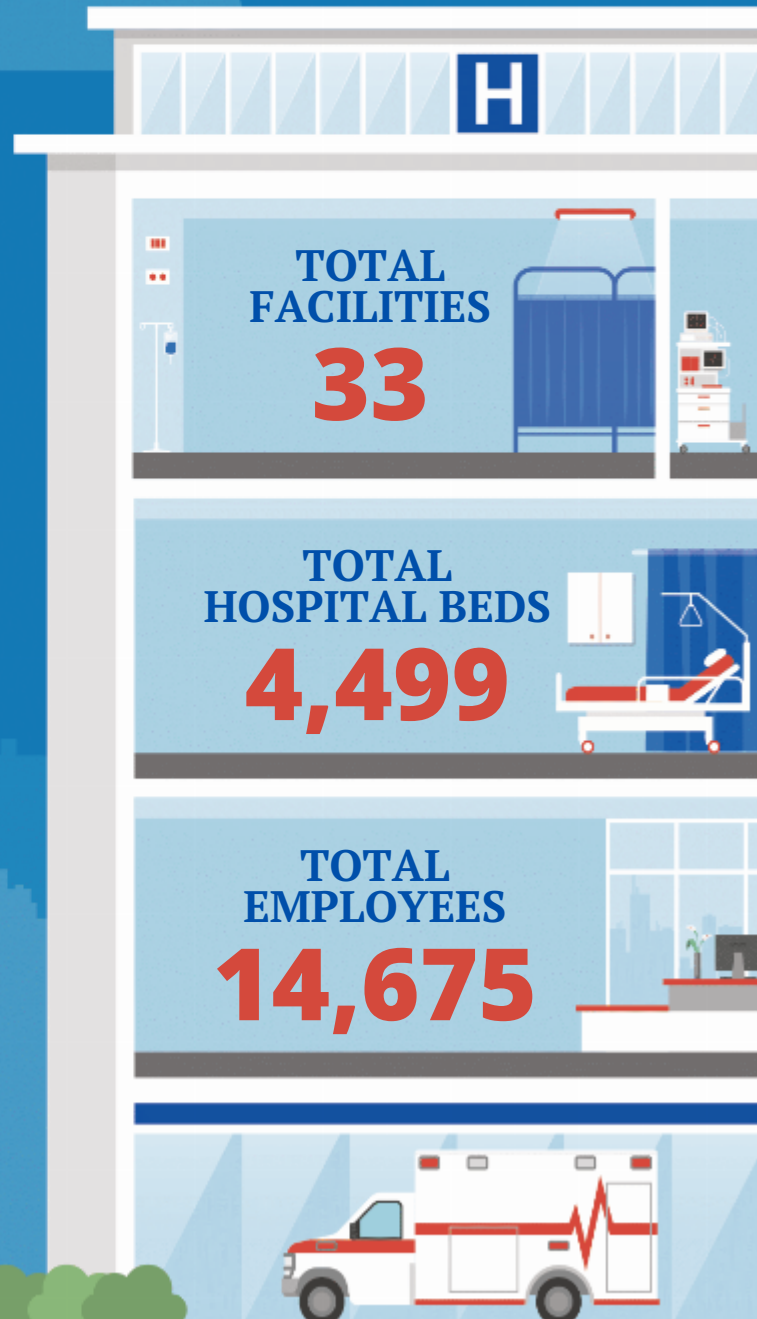
Sen. Bob Casey (D)
Sen. John K. Fetterman (D)

HOUSE *(Click name to view the district)*

Rep. Brian Fitzpatrick (R) / Pennsylvania 1st
Rep. Brendan Boyle (D) / Pennsylvania 2nd
Rep. Dwight Evans (D) / Pennsylvania 3rd
Rep. Madeleine Dean (D) / Pennsylvania 4th
Rep. Mary Gay Scanlon (D) / Pennsylvania 5th
Rep. Chrissy Houlahan (D) / Pennsylvania 6th
Rep. Matt Cartwright (D) / Pennsylvania 8th
Rep. Dan Meuser (R) / Pennsylvania 9th
Rep. Scott Perry (R) / Pennsylvania 10th
Rep. Lloyd Smucker (R) / Pennsylvania 11th
Rep. John Joyce (R) / Pennsylvania 13th
Rep. Guy Reschenthaler (R) / Pennsylvania 14th
Rep. Glenn Thompson Jr. (R) / Pennsylvania 15th
Rep. Mike Kelly Jr. (R) / Pennsylvania 16th
Rep. Chris Deluzio (D) / Pennsylvania 17th



Federation of American Hospitals represents America's tax-paying community hospitals and health systems.





			Beds	Employees
REP. BRIAN FITZPATRICK (R) / PENNSYLVANIA 1ST				
3 HOSPITALS				
Foundations Behavioral Health	Doylestown	Universal Health Services, Inc.	108	149
Lower Bucks Hospital	Bristol	Prime Healthcare Services	139	438
St. Mary Rehabilitation Hospital	Langhorne	Lifepoint Health	50	91
REP. BRENDAN BOYLE (D) / PENNSYLVANIA 2ND				
2 HOSPITALS				
Friends Hospital	Philadelphia	Universal Health Services, Inc.	219	581
Kindred Hospital Philadelphia	Philadelphia	ScionHealth	52	146
REP. DWIGHT EVANS (D) / PENNSYLVANIA 3RD				
2 HOSPITALS				
Fairmount Behavioral Health System	Philadelphia	Universal Health Services, Inc.	239	529
Roxborough Memorial Hospital	Philadelphia	Prime Healthcare Services	107	399
REP. MADELEINE DEAN (D) / PENNSYLVANIA 4TH				
3 HOSPITALS				
Brooke Glen Behavioral Hospital	Fort Washington	Universal Health Services, Inc.	146	355
Horsham Clinic	Ambler	Universal Health Services, Inc.	206	479
Suburban Community Hospital	Norristown	Prime Healthcare Services	73	391
REP. MARY GAY SCANLON (D) / PENNSYLVANIA 5TH				
2 HOSPITALS				
Keystone Center	Chester	Universal Health Services, Inc.	153	177
Kindred Hospital Philadelphia Havertown	Havertown	ScionHealth	57	179
REP. CRISSY HOULAHAN (D) / PENNSYLVANIA 6TH				
1 HOSPITALS				
Encompass Health Rehabilitation Hospital of Reading	Reading	Encompass Health	60	197
REP. MATT CARTWRIGHT (D) / PENNSYLVANIA 8TH				
3 HOSPITALS				
Regional Hospital of Scranton	Scranton	Community Health Systems	328	902
Wilkes-Barre General Hospital	Wilkes-Barre	Community Health Systems	547	1661
Moses Taylor Hospital	Scranton	Community Health Systems	217	903

BACK TO TOP



			Beds	Employees
REP. DAN MEUSER (R) / PENNSYLVANIA 9TH				
1 HOSPITALS				
Geisinger Encompass Health Rehabilitation Hospital	Danville	Encompass Health	42	211

REP. SCOTT PERRY (R) / PENNSYLVANIA 10TH				
2 HOSPITALS				
Encompass Health Rehabilitation Hospital of Mechanicsburg	Mechanicsburg	Encompass Health	75	229
Encompass Health Rehabilitation Hospital of York	Shiloh	Encompass Health	90	273

REP. LLOYD SMUCKER (R) / PENNSYLVANIA 11TH				
2 HOSPITALS				
Lancaster Behavioral Health Hospital	Lancaster	Universal Health Services, Inc.	126	139
Lancaster Rehabilitation Hospital	Lancaster	ScionHealth	59	255

REP. JOHN JOYCE (R) / PENNSYLVANIA 13TH				
5 HOSPITALS				
Conemaugh Miners Medical Center	Hastings	Lifepoint Health	30	133
Conemaugh Memorial Medical Center	Johnstown	Lifepoint Health	539	3644
Roxbury Treatment Center	Shippensburg	Universal Health Services, Inc.	112	162
Encompass Health Rehabilitation Hospital of Altoona	Altoona	Encompass Health	80	352
Conemaugh Nason Medical Hospital	Roaring Spring	Lifepoint Health	45	313

REP. GUY RESCHENTHALER (R) / PENNSYLVANIA 14TH				
1 HOSPITALS				
Conemaugh Meyersdale Medical Center	Meyersdale	Lifepoint Health	20	133

REP. GLENN THOMPSON JR. (R) / PENNSYLVANIA 15TH				
3 HOSPITALS				
Encompass Health Rehabilitation Hospital of Nittany Valley	Bellefonte	Encompass Health	73	206
The Meadows Psychiatric Center	Centre Hall	Universal Health Services, Inc.	117	234
Clarion Psychiatric Center	Clarion	Universal Health Services, Inc.	76	180

↑
BACK TO TOP



			Beds	Employees
REP. MIKE KELLY JR. (R) / PENNSYLVANIA 16TH				
1 HOSPITALS				
Encompass Health Rehabilitation Hospital of Erie	Erie	Encompass Health	108	192
REP. CHRIS DELUZIO (D) / PENNSYLVANIA 17TH				
2 HOSPITALS				
Encompass Health Rehabilitation Hospital of Harmarville	Cheswick	Encompass Health	162	300
Encompass Health Rehabilitation Hospital of Sewickley	Sewickley	Encompass Health	44	142

^
BACK
TO TOP