



MISSISSIPPI

FAH MEMBER FACILITIES

SENATE

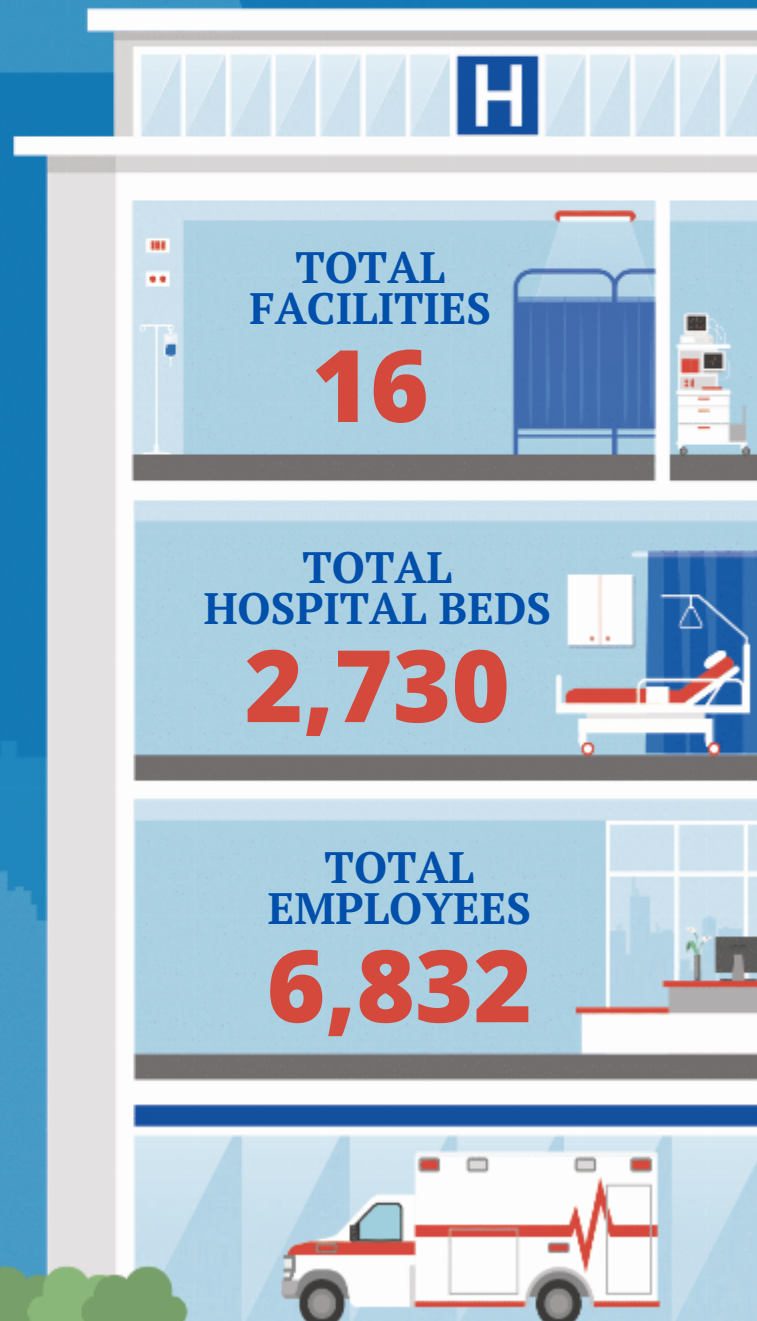
Sen. Roger Wicker (R)
Sen. Cindy Hyde-Smith (R)

HOUSE *(Click name to view the district)*

Rep. Trent Kelly (R) / Mississippi 1st
Rep. Bennie G. Thompson (D) / Mississippi 2nd
Rep. Michael Guest (R) / Mississippi 3rd
Rep. Mike Ezell (R) / Mississippi 4th



Federation of American Hospitals represents America's tax-paying community hospitals and health systems.





MISSISSIPPI FAH MEMBER FACILITIES

			Beds	Employees
REP. TRENT KELLY (R) / MISSISSIPPI 1ST				
1 HOSPITALS				
Parkwood Behavioral Health System	Olive Branch	Universal Health Services, Inc.	148	293
REP. BENNIE G. THOMPSON (D) / MISSISSIPPI 2ND				
5 HOSPITALS				
Bolivar Medical Center	Cleveland	ScionHealth	164	236
Merit Health Central	Jackson	Community Health Systems	429	868
Merit Health Madison	Canton	Community Health Systems	67	272
Merit Health Natchez	Natchez	Community Health Systems	179	511
Merit Health River Region	Vicksburg	Community Health Systems	372	732
REP. MICHAEL GUEST (R) / MISSISSIPPI 3RD				
6 HOSPITALS				
Brentwood Behavioral Healthcare	Flowood	Universal Health Services, Inc.	121	288
Diamond Grove Center	Louisville	Universal Health Services, Inc.	57	154
Alliance Health Center	Meridian	Universal Health Services, Inc.	214	381
Merit Health Rankin	Brandon	Community Health Systems	149	294
Merit Health River Oaks	Flowood	Community Health Systems	160	662
Merit Health Woman's Hospital	Flowood	Community Health Systems	109	213
REP. MIKE EZELL (R) / MISSISSIPPI 4TH				
4 HOSPITALS				
Gulfport Behavioral Health System	Gulfport	Universal Health Services, Inc.	109	183
Merit Health Biloxi	Biloxi	Community Health Systems	198	694
Merit Health Wesley	Hattiesburg	Community Health Systems	211	886
Encompass Health Rehabilitation Hospital, a partner of Memorial Hospital at Gulfport	Gulfport	Encompass	43	165

BACK TO TOP