



# MASSACHUSETTS

## FAH MEMBER FACILITIES

### SENATE

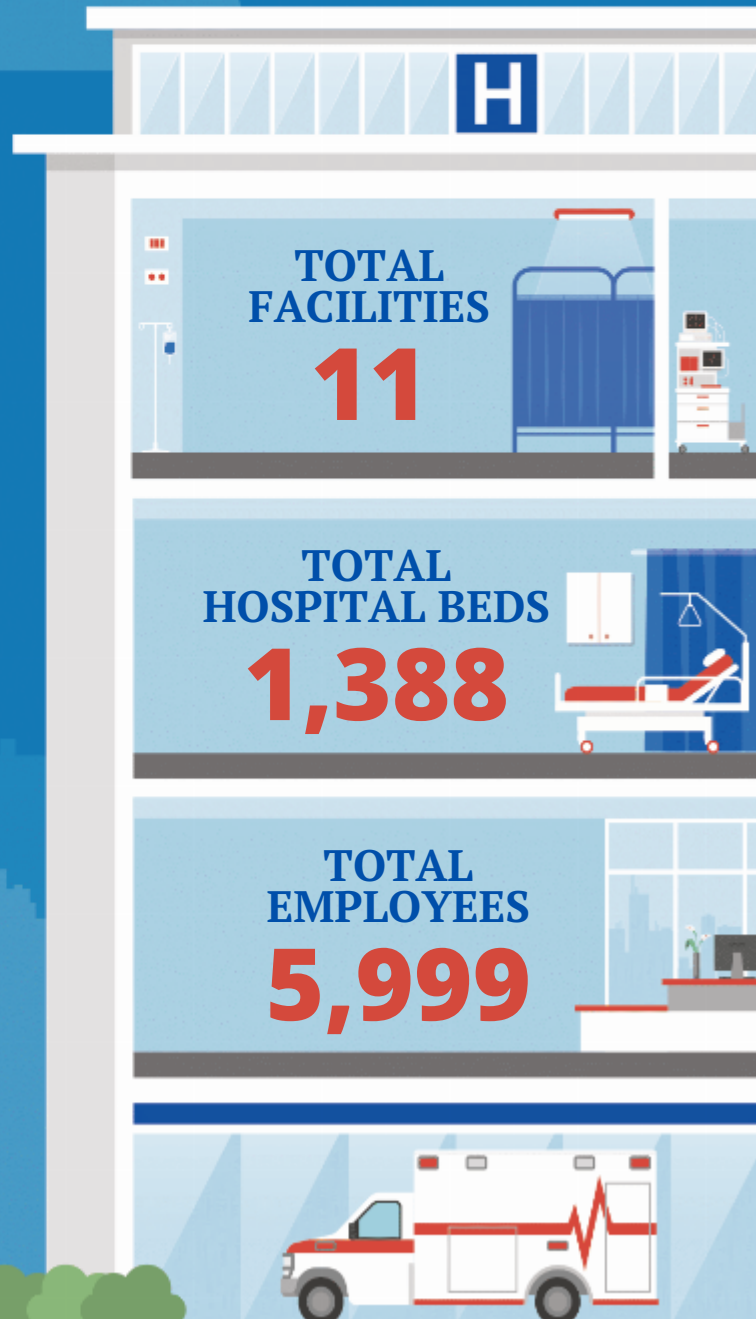
Sen. Elizabeth Warren (D)  
Sen. Ed Markey (D)

### HOUSE *(Click name to view the district)*

Rep. Richard Neal (D) / Massachusetts 1st  
Rep. Jim McGovern (D) / Massachusetts 2nd  
Rep. Jake Auchincloss (D) / Massachusetts 4th  
Rep. Katherine Clark (D) / Massachusetts 5th  
Rep. Stephen Lynch (D) / Massachusetts 8th  
Rep. Bill Keating (D) / Massachusetts 9th



Federation of American Hospitals represents America's tax-paying community hospitals and health systems.





			Beds	Employees
<b>REP. RICHARD NEAL (D) / MASSACHUSETTS 1ST</b>				
<b>1 HOSPITALS</b>				
Encompass Health Rehabilitation Hospital of Western Massachusetts	Ludlow	Encompass	53	244
<b>REP. JIM MCGOVERN (D) / MASSACHUSETTS 2ND</b>				
<b>2 HOSPITALS</b>				
Saint Vincent Hospital	Worcester	Tenet Healthcare Corporation	290	1586
Fairlawn Rehabilitation Hospital	Worcester	Encompass	110	357
<b>REP. JAKE AUCHINCLOSS (D) / MASSACHUSETTS 4TH</b>				
<b>2 HOSPITALS</b>				
Fuller Hospital	Attleboro	Universal Health Services, Inc.	109	350
HRI Hospital	Brookline	Universal Health Services, Inc.	66	247
<b>REP. KATHERINE CLARK (D) / MASSACHUSETTS 5TH</b>				
<b>2 HOSPITALS</b>				
MetroWest Medical Center - Framingham	Framingham	Tenet Healthcare Corporation	136	1061
Encompass Health Rehabilitation Hospital of New England	Woburn	Encompass	179	500
<b>REP. STEPHEN LYNCH (D) / MASSACHUSETTS 8TH</b>				
<b>2 HOSPITALS</b>				
Arbour Hospital	Boston	Universal Health Services, Inc.	138	433
Encompass Health Rehabilitation Hospital of Braintree	Braintree	Encompass	187	497
<b>REP. BILL KEATING (D) / MASSACHUSETTS 9TH</b>				
<b>2 HOSPITALS</b>				
Arbour Counseling Services	Rockland	Universal Health Services, Inc.		441
Pembroke Hospital	Pembroke	Universal Health Services, Inc.	120	283

^  
BACK  
TO TOP