



MAINE

FAH MEMBER FACILITIES

SENATE

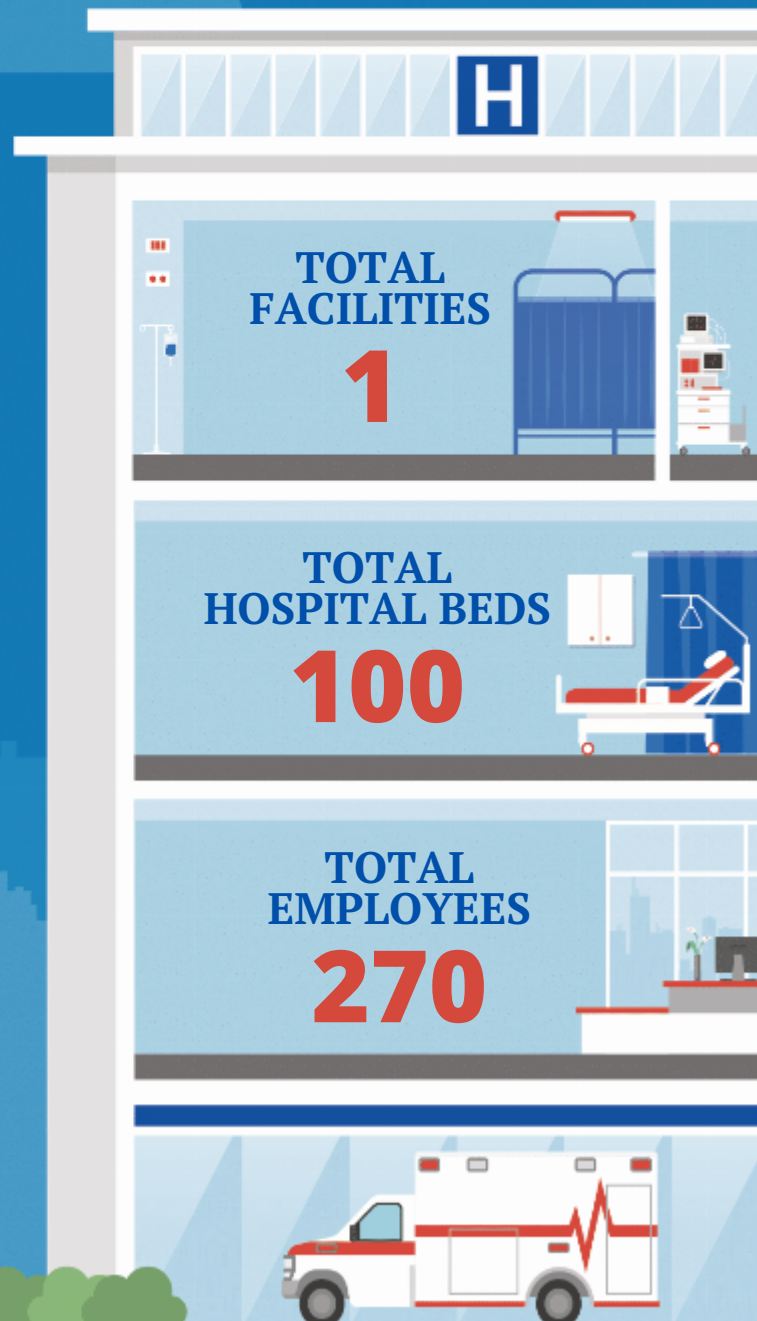
Sen. Susan Collins (R)
Sen. Angus King, Jr. (I)

HOUSE *(Click name to view the district)*

Rep. Chellie Pingree (D) / Maine 1st



Federation of American Hospitals represents America's tax-paying community hospitals and health systems.





MAINE FAH MEMBER FACILITIES

			Beds	Employees
REP. CHELLIE PINGREE (D) / MAINE 1ST				
1 HOSPITALS				
New England Rehabilitation Hospital of Portland, a Joint Venture of Maine Medical Center and Encompass Health	Portland	Encompass	100	270

^
BACK
TO TOP