



KENTUCKY

FAH MEMBER FACILITIES

SENATE

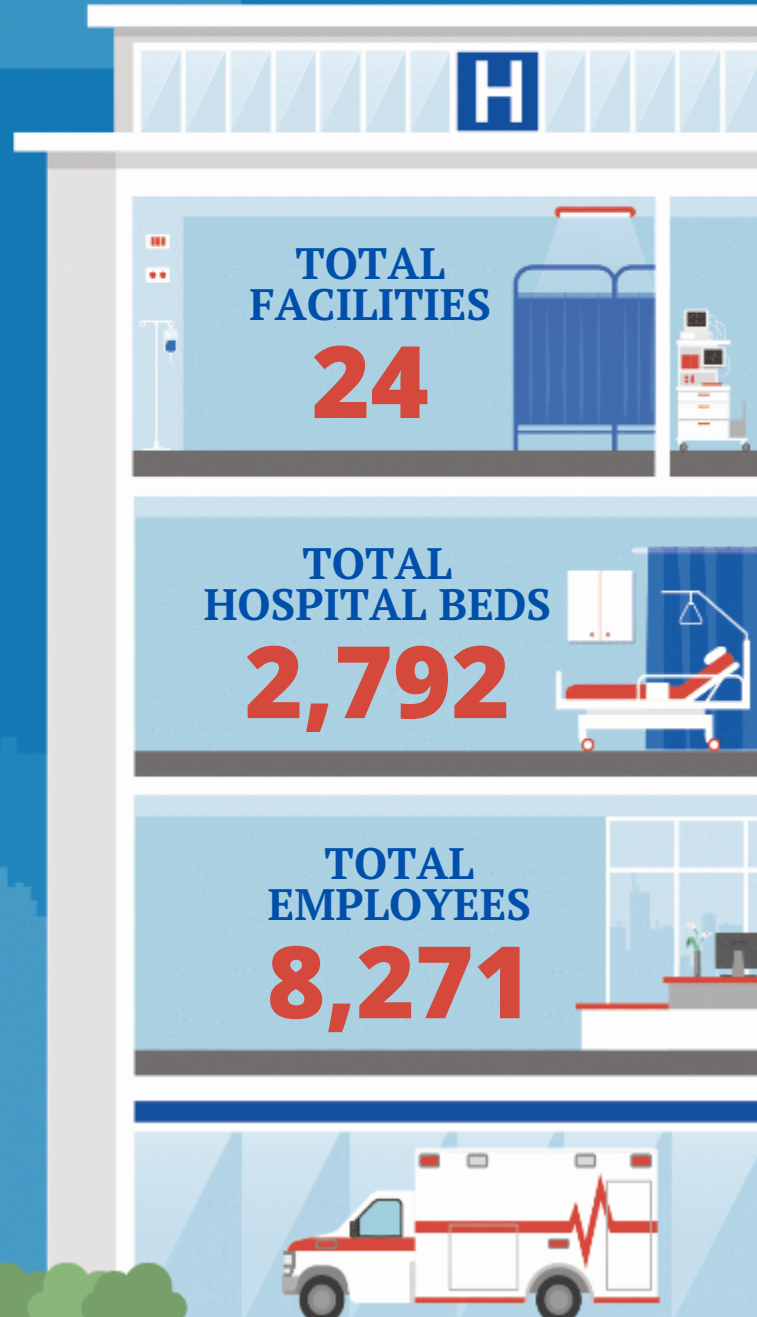
Sen. Mitch McConnell (R)
Sen. Rand Paul (R)

HOUSE *(Click name to view the district)*

Rep. James Comer, Jr. (R) / Kentucky 1st
Rep. Brett Guthrie (R) / Kentucky 2nd
Rep. Morgan McGarvey (D) / Kentucky 3rd
Rep. Thomas Massie (R) / Kentucky 4th
Rep. Hal Rogers (R) / Kentucky 5th
Rep. Andy H. Barr, IV (R) / Kentucky 6th



Federation of American Hospitals represents America's tax-paying community hospitals and health systems.





			Beds	Employees
REP. JAMES COMER, JR. (R) / KENTUCKY 1ST				
5 HOSPITALS				
Logan Memorial Hospital	Russellville	ScionHealth	75	115
Cumberland Hall Hospital	Hopkinsville	Universal Health Services, Inc.	97	149
Frankfort Regional Medical Center	Frankfort	HCA Healthcare	173	722
Jackson Purchase Medical Center	Mayfield	Lifepoint Health	107	586
Spring View Hospital	Lebanon	Lifepoint Health	75	280
REP. BRETT GUTHRIE (R) / KENTUCKY 2ND				
4 HOSPITALS				
TriStar Greenview Regional Hospital	Bowling Green	HCA Healthcare	211	571
Encompass Health Rehabilitation Hospital of Lakeview	Elizabethtown	Encompass	40	138
Rivendell Behavioral Health Hospital	Bowling Green	Universal Health Services, Inc.	125	252
Lincoln Trail Behavioral Health System	Radcliff	Universal Health Services, Inc.	140	227
REP. MORGAN MCGARVEY (D) / KENTUCKY 3RD				
5 HOSPITALS				
Baptist Health Rehabilitation Hospital	Louisville	Encompass	40	
The Brook Hospital KMI	Louisville	Universal Health Services, Inc.	110	243
Kindred Hospital Louisville	Louisville	ScionHealth	384	159
Kindred Hospital Louisville at Jewish Hospital	Louisville	ScionHealth	30	61
The Brook Hospital Dupont	Louisville	Universal Health Services, Inc.	88	191
REP. THOMAS MASSIE (R) / KENTUCKY 4TH				
2 HOSPITALS				
Meadowview Regional Medical Center	Maysville	Lifepoint Health	100	416
Encompass Health Rehabilitation Hospital of Northern Kentucky	Edgewood	Encompass	71	260
REP. HAL ROGERS (R) / KENTUCKY 5TH				
1 HOSPITALS				
Lake Cumberland Regional Hospital	Somerset	Lifepoint Health	295	1377

BACK TO TOP



			Beds	Employees
REP. ANDY H. BARR, IV (R) / KENTUCKY 6TH				
7 HOSPITALS				
Georgetown Community Hospital	Georgetown	Lifepoint Health	75	428
Fleming County Hospital	Flemingsburg	Lifepoint Health	52	195
Clark Regional Medical Center	Winchester	Lifepoint Health	79	570
Bourbon Community Hospital	Paris	Lifepoint Health	58	253
Bluegrass Community Hospital	Versailles	Lifepoint Health	25	124
Cardinal Hill Rehabilitation Hospital	Lexington	Encompass	232	699
The Ridge Behavioral Health System	Lexington	Universal Health Services, Inc.	110	255

^
BACK
TO TOP