



KANSAS

FAH MEMBER FACILITIES

SENATE

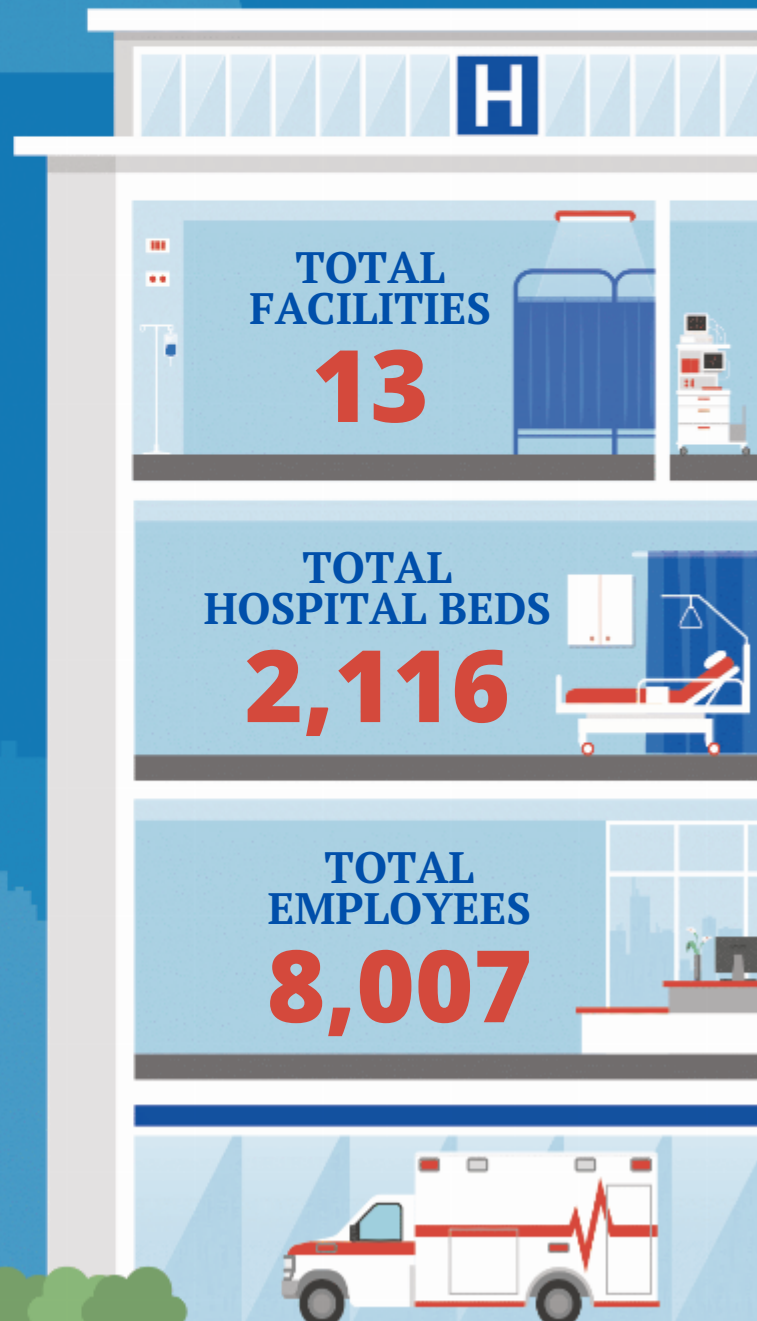
Sen. Jerry Moran (R)
Sen. Roger Marshall (R)

HOUSE *(Click name to view the district)*

Rep. Jake LaTurner (R) / Kansas 2nd
Rep. Sharice Davids (D) / Kansas 3rd
Rep. Ron Estes (R) / Kansas 4th



Federation of American Hospitals represents America's tax-paying community hospitals and health systems.





			Beds	Employees
REP. JAKE LATURNER (R) / KANSAS 2ND				
4 HOSPITALS				
The University of Kansas St. Francis Campus	Topeka	Ardent Health Services	24	1600
Kansas Rehabilitation Hospital	Topeka	Encompass Health	79	178
St. John Hospital	Leavenworth	Prime Healthcare Services	76	145
Providence Medical Center	Kansas City	Prime Healthcare Services	400	724
REP. SHARICE DAVIDS (D) / KANSAS 3RD				
3 HOSPITALS				
MidAmerica Rehabilitation Hospital	Shawnee Mission	Encompass Health	98	278
Overland Park Regional Medical Center	Shawnee Mission	HCA Healthcare	351	1306
Menorah Medical Center	Shawnee Mission	HCA Healthcare	164	981
REP. RON ESTES (R) / KANSAS 4TH				
6 HOSPITALS				
Kansas Rehabilitation Hospital	Wichita	Encompass Health	65	225
Wesley Medical Center	Wichita	HCA Healthcare	760	2570
Wesley Woodlawn Hospital and ER	Wichita	HCA Healthcare	99	
Wesley West ER and Diagnostic Center	Wichita	HCA Healthcare		
Wesley Children's Hospital	Wichita	HCA Healthcare		
Wesley Birthcare Center	Wichita	HCA Healthcare		

^
BACK
TO TOP