



IDAHO

FAH MEMBER FACILITIES

SENATE

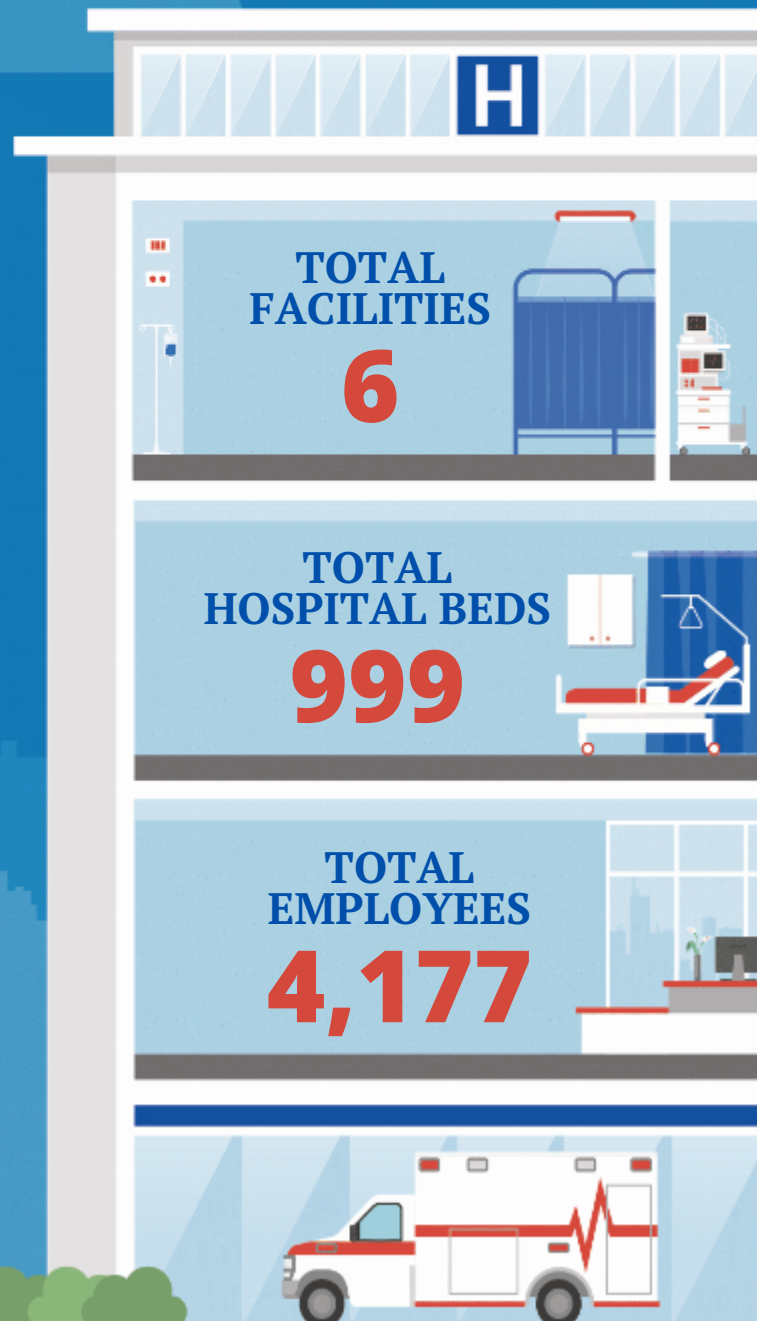
Sen. Mike Crapo (R)
Sen. James E. Risch (R)

HOUSE *(Click name to view the district)*

Rep. Russ Fulcher (R) / Idaho 1st
Rep. Mike Simpson (R) / Idaho 2nd



Federation of American Hospitals represents America's tax-paying community hospitals and health systems.





IDAHO FAH MEMBER FACILITIES

			Beds	Employees
REP. RUSS FULCHER (R) / IDAHO 1ST				
2 HOSPITALS				
St. Joseph Regional Medical Center	Lewiston	ScionHealth	145	378
West Valley Med Ctr	Caldwell	HCA Healthcare	150	504
REP. MIKE SIMPSON (R) / IDAHO 2ND				
4 HOSPITALS				
Intermountain Hospital	Boise	Universal Health Services, Inc.	155	259
Portneuf Medical Center	Pocatello	Ardent Health	205	1470
Saint Alphonsus Regional Rehabilitation Hospital, an affiliate of Encompass Health	Boise	Encompass	40	183
Eastern Idaho Regional Medical Center	Idaho Falls	HCA Healthcare	304	1383

^
BACK TO TOP