



# DISTRICT OF COLUMBIA

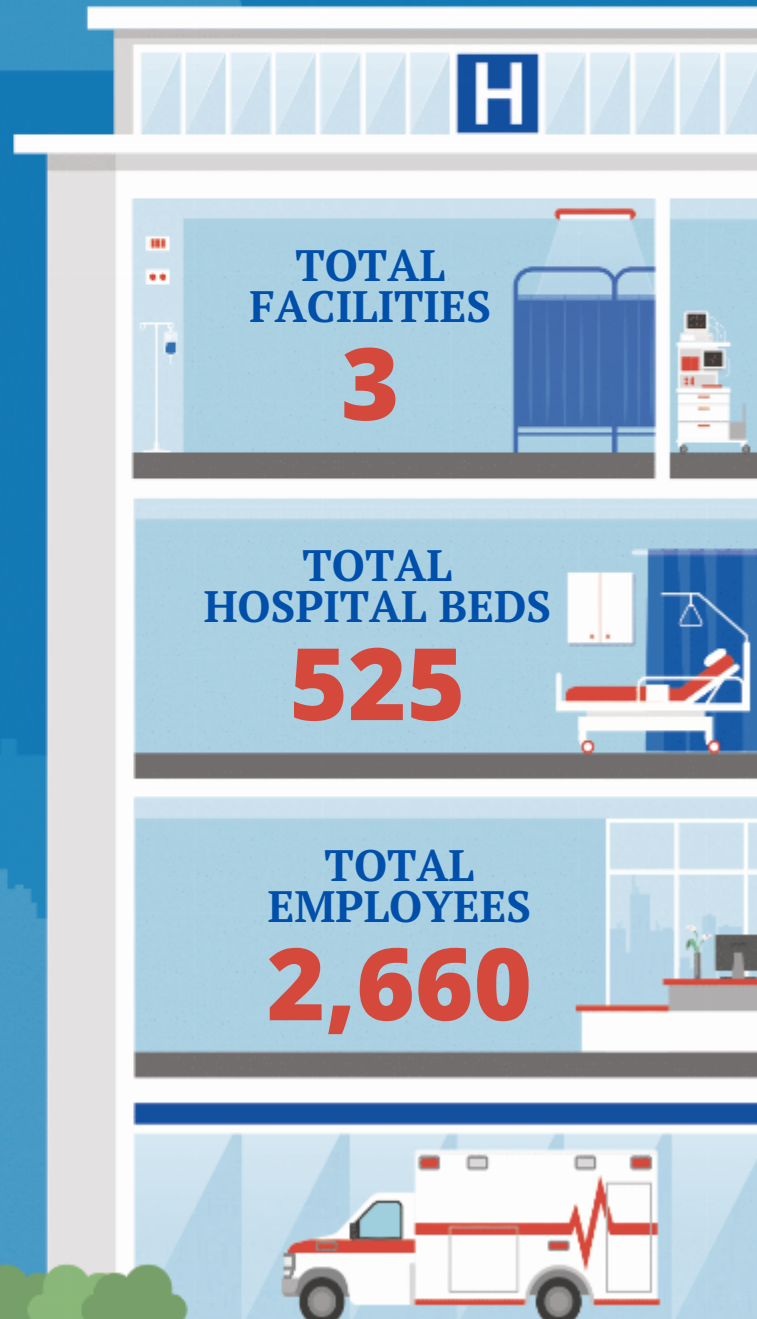
## FAH MEMBER FACILITIES

### HOUSE *(Click name to view the district)*

Rep. Eleanor Holmes Norton (D) / District of Columbia At-Large



Federation of American Hospitals represents America's tax-paying community hospitals and health systems.





			Beds	Employees
<b>DISTRICT OF COLUMBIA AT-LARGE</b>				
<b>3 HOSPITALS</b>				
Cedar Hill Urgent Care GW Health	Washington	Universal Health Services, Inc.		
The George Washington University Hospital	Washington	Universal Health Services, Inc.	395	2414
Psychiatric Institute of Washington	Washington	Universal Health Services, Inc.	130	246

^  
BACK  
TO TOP