



DELAWARE

FAH MEMBER FACILITIES

SENATE

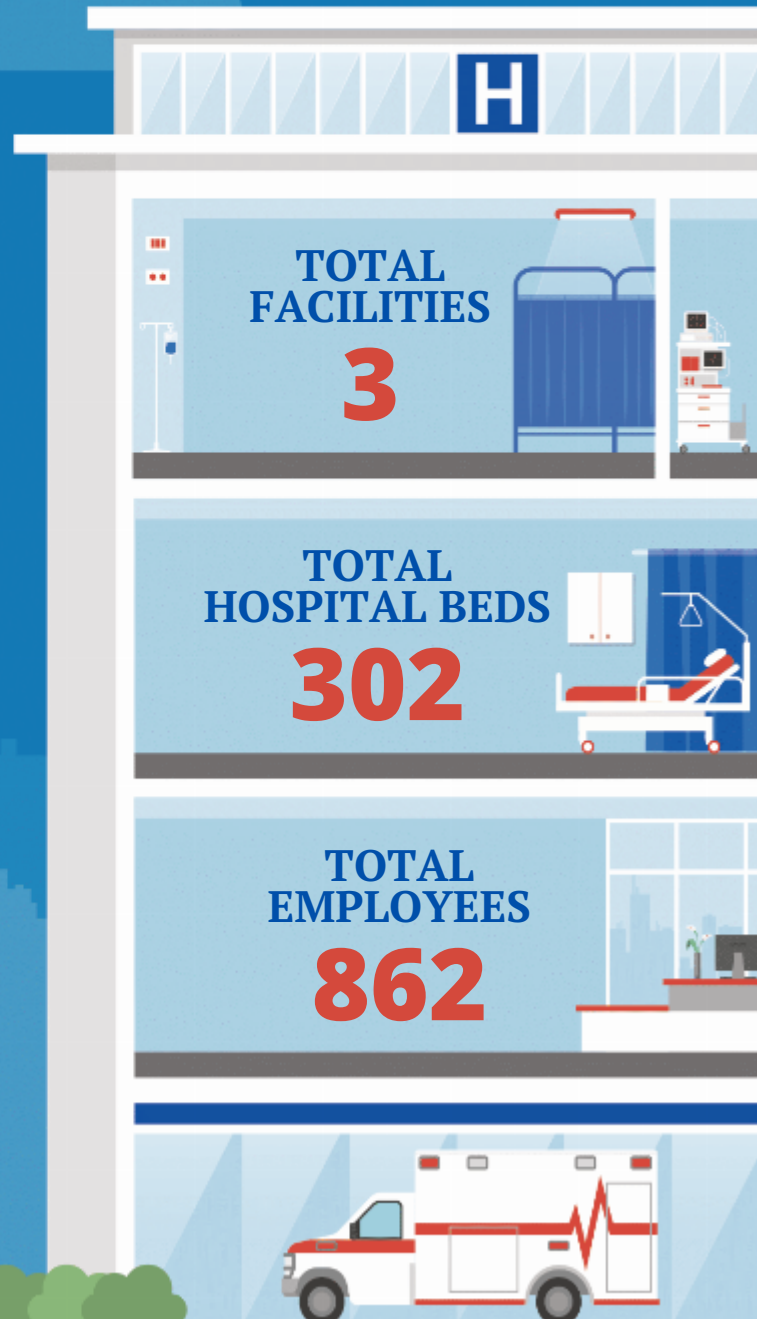
Sen. Lisa Blunt Rochester (D)
Sen. Chris Coons (D)

HOUSE *(Click name to view the district)*

Rep. Sarah McBride (D) / Delaware At-Large



Federation of American Hospitals represents America's tax-paying community hospitals and health systems.





DELAWARE FAH MEMBER FACILITIES

			Beds	Employees
DELAWARE AT-LARGE				
3 HOSPITALS				
Dover Behavioral Health System	Dover	Universal Health Services, Inc.	104	283
Rockford Center	Newark	Universal Health Services, Inc.	148	341
Encompass Health Rehabilitation Hospital of Middletown	Middletown	Encompass	50	238

^
BACK
TO TOP