



ARKANSAS

FAH MEMBER FACILITIES

SENATE

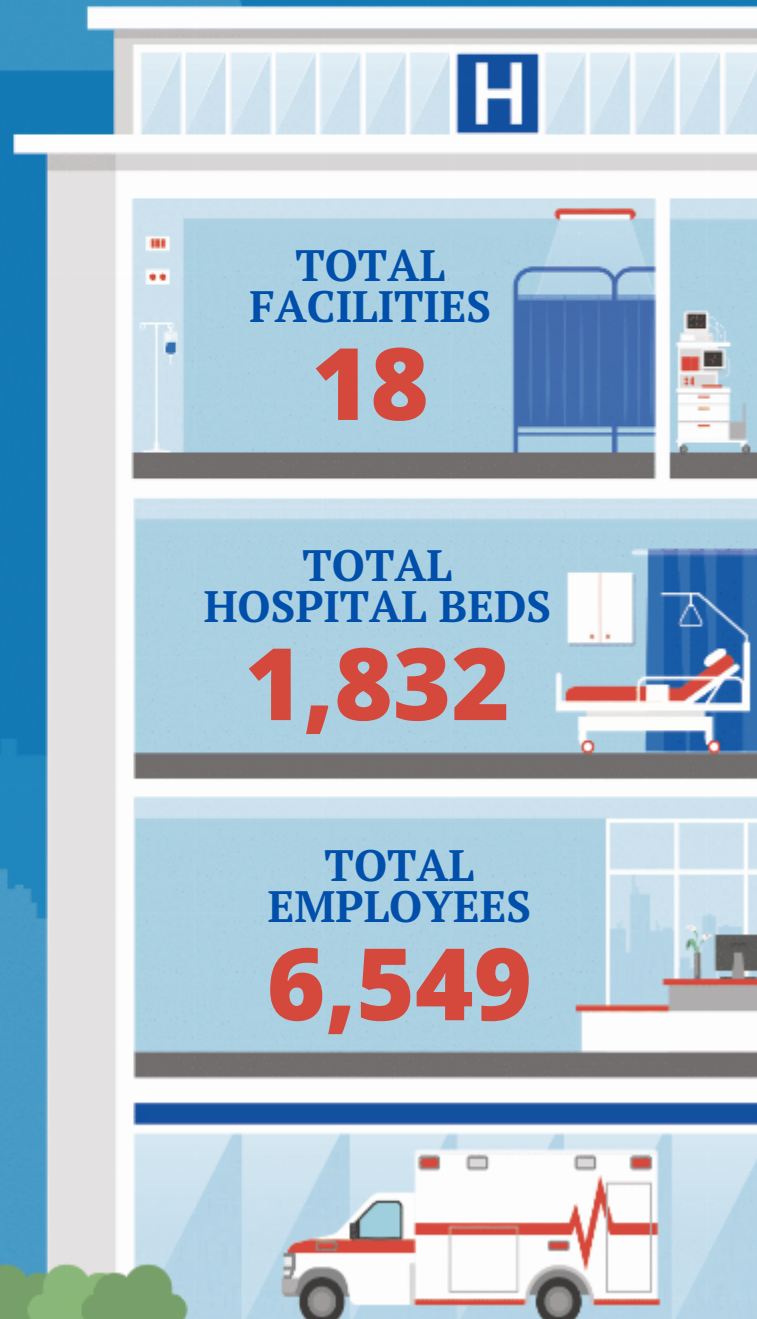
Sen. John Boozman (R)
Sen. Tom Cotton (R)

HOUSE *(Click name to view the district)*

Rep. Rick Crawford (R) / Arkansas 1st
Rep. French Hill (R) / Arkansas 2nd
Rep. Steve Womack (R) / Arkansas 3rd
Rep. Bruce Westerman (R) / Arkansas 4th



Federation of American Hospitals represents America's tax-paying community hospitals and health systems.





ARKANSAS FAH MEMBER FACILITIES

			Beds	Employees
REP. RICK CRAWFORD (R) / ARKANSAS 1ST				
1 HOSPITALS				
Encompass Health Rehabilitation Hospital of Jonesboro	Jonesboro	Encompass	90	323
REP. FRENCH HILL (R) / ARKANSAS 2ND				
7 HOSPITALS				
Cornerstone Specialty Hospitals Little Rock	Little Rock	ScionHealth	40	61
The Bridgeway	North Little Rock	Universal Health Services, Inc.	127	173
Pinnacle Pointe Behavioral Healthcare System	Little Rock	Universal Health Services, Inc.	127	302
Rivendell Behavioral Health Services of Arkansas	Benton	Universal Health Services, Inc.	80	188
The Pointe Outpatient Behavioral Health Services	Conway	Universal Health Services, Inc.		188
CHI St. Vincent Sherwood Rehabilitation Hospital, a partner of Encompass Health	Sherwood	Encompass	83	315
Saline Memorial Hospital	Benton	Lifepoint Health	177	1021
REP. STEVE WOMACK (R) / ARKANSAS 3RD				
7 HOSPITALS				
Encompass Health Rehabilitation Hospital of Fort Smith	Fort Smith	Encompass	80	209
Encompass Health Rehabilitation Hospital, a partner of Washington Regional	Fayetteville	Encompass	80	278
Willow Creek Women's Hospital	Springdale	Community Health Systems	64	244
Siloam Springs Regional Hospital	Siloam Springs	Community Health Systems	73	212
Northwest Medical Center - Springdale	Springdale	Community Health Systems	222	733
Northwest Medical Center - Bentonville	Bentonville	Community Health Systems	128	478
Springwoods Behavioral Health	Fayetteville	Universal Health Services, Inc.	80	156
REP. BRUCE WESTERMAN (R) / ARKANSAS 4TH				
3 HOSPITALS				
Saint Mary's Regional Medical Center	Russellville	Lifepoint Health	170	735
National Park Medical Center	Hot Springs National Park	Lifepoint Health	163	722
CHI St. Vincent Hot Springs Rehabilitation Hospital, a partner of Encompass Health	Hot Springs	Encompass	48	211

BACK TO TOP