



ALABAMA

FAH MEMBER FACILITIES

SENATE

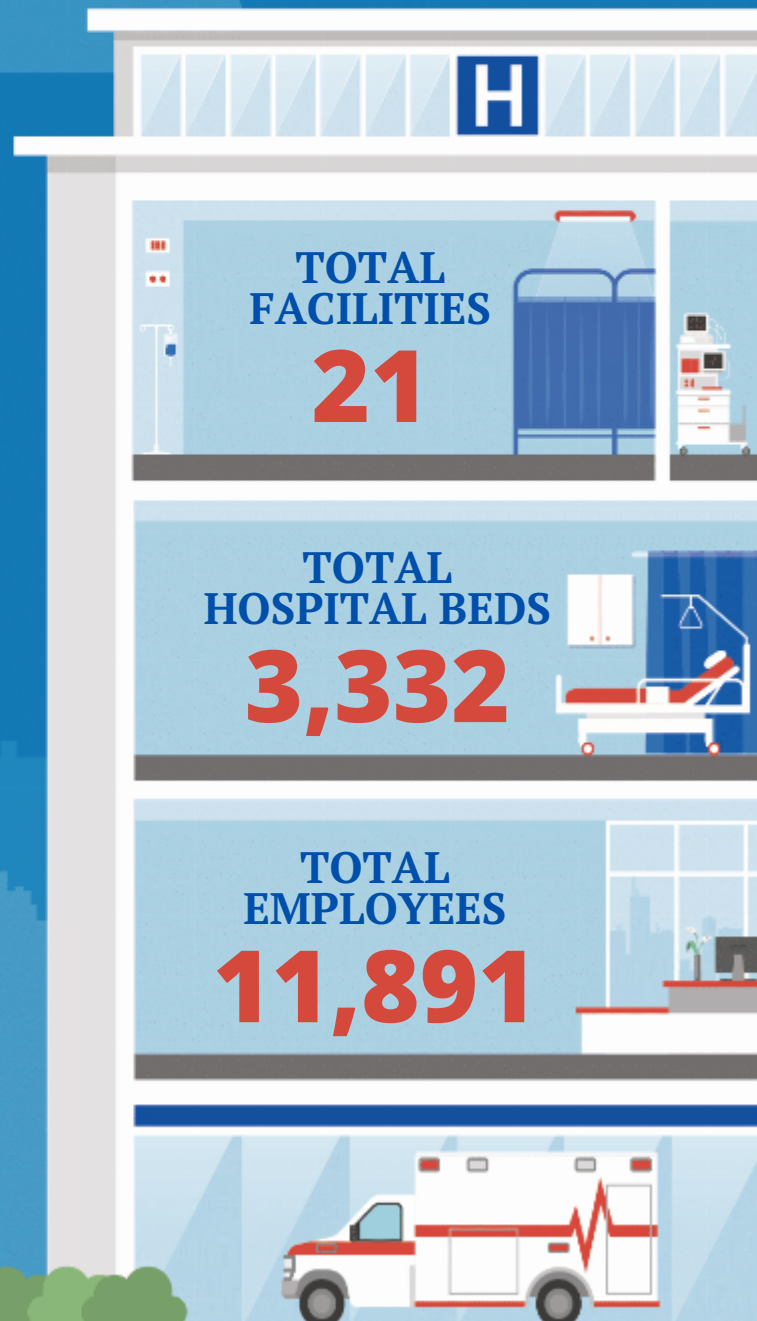
Sen. Tommy Tuberville (R)
Sen. Katie Britt (R)

HOUSE *(Click name to view the district)*

Rep. Barry Moore (R) / Alabama 1st
Rep. Shomari Figures (D) / Alabama 2nd
Rep. Mike Rogers (R) / Alabama 3rd
Rep. Robert B. Aderholt (R) / Alabama 4th
Rep. Dale W. Strong (R) / Alabama 5th
Rep. Gary Palmer (R) / Alabama 6th
Rep. Terri Sewell (D) / Alabama 7th



Federation of American Hospitals represents America's tax-paying community hospitals and health systems.





ALABAMA FAH MEMBER FACILITIES

			Beds	Employees
REP. BARRY MOORE (R) / ALABAMA 1ST				
1 HOSPITALS				
South Baldwin Regional Medical Center	Foley	Community Health Systems	112	739
REP. SHOMARI FIGURES (D) / ALABAMA 2ND				
5 HOSPITALS				
Laurel Oaks Behavioral Health Center	Dothan	Universal Health Services, Inc.	118	193
Encompass Health Rehabilitation Hospital of Dothan	Dothan	Encompass	56	235
Flowers Hospital	Dothan	Community Health Systems	235	1269
Medical Center Enterprise	Enterprise	Community Health Systems	131	405
Andalusia Health	Andalusia	ScionHealth	88	187
REP. MIKE ROGERS (R) / ALABAMA 3RD				
1 HOSPITALS				
Rehabilitation Hospital of Phenix City	Phenix City	Encompass	58	239
REP. ROBERT B. ADERHOLT (R) / ALABAMA 4TH				
5 HOSPITALS				
Gadsden Regional Medical Center	Gadsden	Community Health Systems	346	1273
Riverview Regional Medical Center	Gadsden	Prime Healthcare Services	281	549
North Alabama Shoals Hospital	Muscle Shoals	Lifepoint Health	178	387
North Alabama Medical Center	Florence	Lifepoint Health	358	1300
Encompass Health Rehabilitation Hospital of Gadsden	Gadsden	Encompass	49	202
REP. DALE W. STRONG (R) / ALABAMA 5TH				
2 HOSPITALS				
Encompass Health Rehabilitation Hospital of North Alabama	Huntsville	Encompass	85	364
Crestwood Medical Center	Huntsville	Community Health Systems	180	1183
REP. GARY PALMER (R) / ALABAMA 6TH				
3 HOSPITALS				
Encompass Health Rehabilitation Hospital of Shelby County	Pelham	Encompass	34	149
Grandview Medical Center	Birmingham	Community Health Systems	372	1760
Alabama Clinical Schools	Birmingham	Universal Health Services, Inc.	80	141

BACK TO TOP



ALABAMA FAH MEMBER FACILITIES

			Beds	Employees
REP. TERRI SEWELL (D) / ALABAMA 7TH				
4 HOSPITALS				
Vaughan Regional Medical Center-Parkway Campus	Selma	ScionHealth	175	273
Hill Crest Behavioral Health Services	Birmingham	Universal Health Services, Inc.	221	308
Encompass Health Lakeshore Rehabilitation Hospital	Birmingham	Encompass	100	441
Encompass Health Rehabilitation Hospital of Montgomery	Montgomery	Encompass	75	294

^
BACK
TO TOP